



## BELGRADE REGIONAL CONSERVATION ALLIANCE



Belgrade Regional Conservation Alliance

BRCA conserves the lands, water quality, and natural heritage of the Belgrade Lakes Watershed.

### BRCA Announces Capital Campaign: Kennebec Highlands Project, Phase III

In the summer of 2008, BRCA was awarded \$227,000 from the Land for Maine's Future program for the third phase of the Kennebec Highlands project. Phase I and II protected 5,500 acres for public use and habitat – the only such area in central Maine. Phase III target areas include important inholdings and land adjacent to the Highlands, including the summit of McGaffey Mountain. Through acquisitions and easements, Phase III will add 1,011 acres to the Highlands and bring the total amount of protected land to over 6,500 acres.

Phase III target areas include several hundred acres within the watershed of Long Pond and areas draining into the Sandy River, where Maine IF&W recently documented the return of breeding Atlantic salmon. The Phase III project will also secure two excellent native fisheries with protection of the entire watershed of Boody Pond and much of the watershed of McIntire Pond.

Phase III will also protect several miles of headwater streams which helps improve water quality in larger water bodies downstream. These streams are also valuable habitat in their own right. Conservation will help guarantee that hiking, fishing and hunting will be there for future generations.

As development pressures continue to encroach on the beautiful Belgrade Lakes, it is imperative that we act now to protect our remaining large tracts of land and open space. Once they are sold and divided, it will be almost impossible to conserve them for the future. Continuing our efforts to protect the Kennebec Highlands will assure that future generations will be able to enjoy the mountains, ponds and landscape as we do now.

As a land trust, we have both a legal and ethical commitment to take care of conserved lands in perpetuity. That means ensuring they will be here and in good shape for generations into the future. Stewardship includes concrete demands like paying taxes, performing road and trail maintenance, visiting easement properties to ensure compliance, and annual reporting to the IRS as well as the state. Because stewardship is a permanent responsibility with ongoing costs, a portion of BRCA's fundraising effort for the Phase III project will be to raise stewardship endowment funds.

With your help, BRCA must now raise \$595,000 over the next two years to complete these acquisitions, secure the matching grant of \$227,000 from the Land for Maine's Future program, and provide a stewardship endowment to protect these vital areas in the Kennebec Highlands. Help us conserve the remainder of the Kennebec Highlands with your donations, having satisfaction that your contributions go to protect this heritage for all future generations.

BRCA has purchased, holds an option on, or is near reaching an agreement on over 1,000 acres in all the target properties for Phase III of the Kennebec Highlands. BRCA expects to close on most or all of these parcels by the end of 2009. Although BRCA has already purchased a portion of this land, we need to recoup these funds as soon as possible to ensure long-term financial strength and to restore our ability to act quickly if the opportunity to purchase other target parcels becomes available. In addition to covering our internal costs, BRCA is required to match the funds awarded by the Land for Maine's Future program.

Continued on Page 3



**'The landscape features of the Kennebec Highlands are outstanding, as is its importance as wildlife habitat. Preservation of this large contiguous block of habitat will have a long-term beneficial value — not just for the Belgrade Lakes region, but for the state as a whole.'**

**William Hancock  
Maine Audubon Society, 2001**

## President's Column

With the new Land for Maine's Future grant, the expansion of the Kennebec Highlands, and the endowment of our stewardship fund, we are launching our most significant fundraising effort in years. Our timing coincides with a time of economic challenge and opportunity which should make the effort interesting. My appeal to our members is to give and pledge what is possible this season, either to BRCA or to another charity worthy of your generosity. Charities around the country are expecting a tough period ahead. I want to thank our members for the successes of the last 20 years and hope you feel proud of what you have accomplished. With best wishes from BRCA for the holidays and for the spring ahead, BRCA is ready to pursue its conservation mission for the next 20 years.

A housekeeping detail: we need to update our bylaws. The last time we did this was 2004. The BRCA Board has approved the new set of by-laws and we need to have our members adopt them.

We'll be voting on these changes at a special members meeting to be held at the **BRCA office at 7:00 p.m. on December 18, 2008**, the same evening as the BRCA board meeting. All members are invited to attend. Copies of the bylaws changes are available at the office or by mail or email. Send a message to [brca@gwi.net](mailto:brca@gwi.net) to request a copy.

And, thanks again.  
Charlie Baeder

**BRCA MEMBERS  
SPECIAL MEETING,  
THURS., DEC. 18TH AT 7 P.M.**

YOUR INVITATION TO THE 

## Executive Director's Column

A busy summer has quickly turned into a busy fall. Our Youth Conservation Corps completed a near record 55 projects and our Courtesy Boat Inspectors inspected over 7000 boats, including 10 that had variable milfoil on them coming out of Messalonskee and one from MA that was preparing to launch at Great Pond with Eurasian water milfoil on it. Aquafest turned out to be a great success with over a hundred runners participating in the 5K race and at least that many kids learning about lakes through fun activities supervised by the various lake associations that comprise the BRCA Lake Trust. Kudos to Maggie Shannon and her planning team that pulled this watershed event together.

Just as the warmth of summer is rapidly turning into the icy chill of winter, the excitement of receiving approval for a \$227,000 grant from the

Board for our Kennebec Highlands Expansion has quickly transformed into the cold hard reality of having to raise over \$500,000 as "match" during the worst economic crisis since the Great Depression. This economic downturn has created some great opportunities for BRCA with some landowners willing to sell property at reasonable prices. Of course to take advantage of these opportunities, we need to have a successful capital campaign, which means we need the support of YOU, our members, more than ever. Not only will your contributions enable us to leverage the LMF money but will enable us to protect important parts of the landscape before it is too late.

We are still continuing to try to expand our membership and encourage more volunteers to become involved in our programs. It is a great way to

meet and interact with your fellow members, working on rewarding and worthwhile projects like the expansion of our French Mountain trail described elsewhere in this newsletter.

We are looking for new members who are a lot like our current members- in love with this part of Maine and concerned enough to help protect it. The best place to find those people is among the friends and families of our current members.

If you have a friend or family member who shares your conservation ideals who is not yet a member, please ask them to join or consider giving them a gift membership. Any member who refers a new member will receive a special gift as a token of our appreciation. Please contact me or stop by the office if you have any ideas about how to make BRCA more responsive to your needs. All the best, Peter Kallin

## Board of Directors

**Charlie Baeder**  
*President*

**Dick Greenan**  
*Treasurer*

**Roy Bouchard**  
*Secretary*

**Warren Balgooyen**  
*Member at Large*

**Mel Croft**  
*East Pond Association*

**Pat Donahue**  
*Belgrade Lakes Association*

**Jane Eberle**  
*Belgrade Lakes Association*

**Bill Libby**  
*Snow Pond/Messalonskee Lake Association*

**Don Mairs**  
*McGrath Pond & Salmon Lake Association*

**Jack Schultz**  
*Belgrade Lakes Association*

**Maggie Shannon**  
*Belgrade Lakes Association*

**Bill Swan**  
*Belgrade Lakes Association*

**Peter Kallin, PhD, PWS**  
*BRCA Executive Director*

## Kennebec Highlands Project, Phase III : Continued

The Kennebec Highlands remains the largest contiguous block of conserved land in central Maine, and one of the few potential landscape-scale conservation projects in this part of the state. However, the area is increasingly threatened by development and subdivisions and many properties are actually for sale or have changed hands recently. To protect this area from further development, we need to act now.

To forever preserve this magnificence for generations to come, we need your help with contributions at all levels. In addition to cash donations, gifts of appreciated securities, real estate, or other assets may offer significant tax benefits. Your gift may also be pledged over two or more years.

For your convenience, BRCA maintains a brokerage account at LPL/Golden Pond Wealth Management, 129 Silver Street, Waterville, Maine 04901. Instructions for delivering gifts of securities may be obtained from Golden Pond Wealth Management by calling Holly Caron at (207) 873-2200.

The Belgrade Regional Conservation Alliance, Inc. is recognized by the Internal Revenue Service as a 501(c) (3) charitable organization, with all gifts tax-deductible to the extent allowed by law.

For any questions about making a gift to BRCA please contact BRCA Treasurer Dick Greenan at (207) 495-3740 (dick@goodxrays.com) or the BRCA at:

Belgrade Regional Conservation Alliance, Inc.  
P.O. Box 250  
Belgrade Lakes, ME 04918  
(207) 495-6039  
brca@gwi.net

The Belgrade Regional Conservation Alliance is the only conservation group dedicated to preserving the natural heritage of the entire Belgrade Lakes watershed.

Since 1988, BRCA has been devoted to protecting the local environment through land acquisition, water quality management, and other conservation projects.

We currently have 996 acres under protection and are poised to add another 735 acres in addition to the Kennebec Highlands Phase III.

BRCA works with area lake associations, state and town governments, private landowners, and other conservation groups to preserve the area's natural resources and maintain public access for low-impact recreational activities like hiking, fishing, hunting, canoeing and cross-country skiing.

BRCA needs your help today to raise \$595,000 over the next two years to complete Phase III acquisitions and to continue our efforts to ensure the long term health of the Belgrade Lakes Watershed.

Purchase price:	\$563,000
Fees and closing costs:	\$59,000
Stewardship funds:	\$200,000
Total Phase III Project costs:	\$822,000
Land for Maine's Future funding:	\$227,000
Fundraising campaign goal:	<b>\$595,000</b>



BRCA's accomplishments and activities include:

- Leading the acquisition and stewardship of the 5,500 acre Kennebec Highlands
- ~
- Protecting popular recreation spots like The Mountain, French Mountain, and Mount Phillip
- ~
- Managing the Milfoil and Courtesy Boat Inspection program to stop the spread of invasive species
- ~
- Conducting water quality surveys on all seven lakes in the Belgrade Lakes Watershed
- ~
- Managing the BRCA Conservation Corps

### Pete's Corner: Letters to the Editor

Dear Jason and Peter,

On behalf of the Crystal Spring Camps Owner's Association, I would like to thank you both so much for your extensive time and effort in helping us survey and apply the erosion control mulch throughout the grounds of the Association. We are truly indebted to your team for helping us take some needed steps to maintain the environmental integrity and well-being of our treasured cottages and their surroundings. As a small thank you, please accept the enclosed check for \$100 to the Conservation Corps. We certainly appreciate, as well, your work in applying for the federal grant and look forward to any feedback you may receive regarding where that may stand, as the CSC road will probably be the next important project that we will tackle. Again, our thank you to you both and we look forward to working with you on future projects toward the environmental improvement of our Association. Sincerely, Shelley Dropkin, CSC Board Representative

### Land Trust Board Members

**Brian Alexander**  
**Charlie Baeder**  
**Warren Balgooyen**  
**Roy Bouchard**  
**Pat Donahue**  
**David Ladd**  
**Jack Schultz**  
**Bill Swan**  
~  
**Peter Kallin**

# Kennebec Highlands: Why?

What is so important about the Kennebec Highlands? This large undeveloped tract of land is important to the area both in terms of wildlife and natural resource conservation and as a public recreation area. The primary conservation values of the Kennebec Highlands are undeveloped open space, undeveloped ponds, and large unfragmented wildlife habitat.

## Undeveloped Open Space

The economics of open space includes:

- **Property tax stability:** Open-space conservation often contributes to controlling taxes. In communities with a comprehensive plan that concentrates housing and business development near existing services and that stipulates conservation of open space, taxes do not increase, or they do not increase as rapidly as in towns that don't plan.
- **Ecotourism:** Some of the most important areas for migrating birds and other wildlife offer marvelous economic opportunities because they attract large numbers of nature lovers or ecotourists, who spend billions of dollars annually to watch and enjoy wildlife. In past decade, ecotourism has grown faster than any other form of tourism. For ecotourism to be a sustainable form of economic endeavor, the natural resources must be protected.
- **Maintenance of property values:** Frequently, property values near preserves are higher than those of properties surrounded by houses. Properties near open space are desirable because they offer beauty, seclusion, and high resale value.
- **Groundwater recharge and pollution protection:** As development eats open space away, the integrity of existing water resources is threatened. Natural habitats act as giant sponges, allowing rain water to percolate into the ground without being polluted, and to recharge aquifers with clean water. The result: taxpayer savings.

Excerpted from a paper "Economics of Open Space" by Paul Kerlinger



## Kennebec Highlands High Peaks

While its surroundings are characterized by flat to gently rolling terrain, elevations of the Kennebec Highlands range from 237 to over 1,200 feet above sea level, and **Vienna and McGaffey Mountains** are two of the area's highest peaks.

The features of the Kennebec Highlands that make it an attractive area for outdoor recreation are:

- Outdoor Recreation**
- its overall size as public land in central Maine;
  - its lack of building development and permanent roads;
  - a varied terrain that includes multiple elevations and lowlands;
  - scenic views of lakes and distant mountains from a variety of locations on the present ownership and on abutting private land;
  - five undeveloped ponds in its interior, some with important sport fisheries, and frontage on Long Pond;
  - deer wintering areas and waterfowl habitat that support hunting;
  - a network of old field and woods roads – estimates range from nine to ninety miles – that provide access to destinations within the unit and routes for a variety of trail activities;
  - other sites of interest, including blueberry fields and remnants of former farmsteads; and
  - access from public or private roads.

## Undeveloped Ponds

Several small, undeveloped ponds in the Kennebec Highlands provide important native fish habitat.

<u>Boody Pond</u> 13 acres	<u>Kidder Pond</u> 21 acres	<u>McIntire Pond</u> 12 acres
Brown bullhead, banded killifish, golden shiner, creek chub	Brown bullhead, white sucker, chain pickerel, smallmouth bass, golden shiner, brook trout	Golden shiner, northern redbelly dace, blacknose dace, brook trout, creek chub



## Large Unfragmented Wildlife Habitat

516 acres of deer wintering areas, 389 acres of inland wading bird & waterfowl habitat

The Kennebec Highlands are a designated "Focus Area of Ecological Significance," under the Beginning with Habitat (BWH) program administered by Department of Inland Fisheries and Wildlife. Many features qualify the Highlands as a focus area: undeveloped ponds; abundant riparian areas (transition zones between aquatic habitats and wetlands and dry or upland habitats); significant wildlife habitats (deer wintering areas and wading bird and waterfowl habitat); and an exemplary natural community (unpatterned openbasin fen ecosystem). However, most important is its size and lack of building development and permanent roads. Large blocks of land are important to species with large home ranges (e.g., bobcat) and other species that may have small home ranges, but will only be successful over the long term in larger habitat blocks.

## These lands offer a spectrum of high quality natural resources and recreational opportunities, including:

<b>Natural Resources</b>	<b>Recreational Opportunities</b>
Mixed-wood forests	Hiking
Lake and mountain view sheds	Mountain biking
Fish and wildlife habitats	Horseback riding
Rare plants/exemplary natural communities	Cross-country skiing
Undeveloped ponds	Snowmobiling
Blueberry fields	Wildlife observation
Highest summits in the region	Nature study
	Berry picking
	Fishing
	Hunting & trapping
	Canoeing-kayaking
	Picnicking

## What are Conservation Easements ?

**A conservation easement is a restriction placed on a piece of property to protect its associated resources.**

A conservation easement is an important tool for the conservation of private lands. It is a voluntary, legally binding agreement that limits certain types of development from taking place on a piece of property now and in the future, while protecting the property's ecological or open-space values. Conservation easements protect the land for future generations while allowing owners to retain many private property rights and to live on and use their land, at the same time **potentially providing them with tax benefits.**

A conservation easement is legally binding, whether the land is sold or passed on to heirs. An easement selectively targets only those rights necessary to protect certain conservation values, such as water quality or wildlife habitat, and is individually tailored to meet a landowner's needs. Because the land remains in private ownership, with the remainder of the rights intact, an easement property continues to provide economic benefits for the area in the form of jobs, economic activity and property taxes.

## Maine Conservation Easements (2004-2005)

1.5 million + acres in Maine in conservation easements

Hundreds of Maine farmers and land owners have placed easements on their land

95% of Maine's land is private

Excerpted from the Nature Conservancy's website

## New Federal Law Increases Tax Benefits for Voluntary Conservation Agreements

Congress recently passed a law extending the tax benefits of protecting private land for two more years. The legislation improves the tax incentive for conservation easements by allowing conservation donors to:

- Deduct up to 50% of their adjusted gross income in any year (up from 30%)
- Deduct up to 100% of their adjusted gross income if the majority of that income came from farming, ranching or forestry; and
- Continue to take deductions for as long as 16 years (up from 6 yrs)

## BRCA Job Opening

The Belgrade Regional Conservation Corps (BRCC), a committee of the Belgrade Regional Conservation Alliance, is seeking candidates for the position of Director for the 2009 season. The BRCC is comprised of crews of high school students performing erosion control and run-off reduction projects on private and public land throughout the Belgrade Lakes watershed. The position runs from late May/early June through August.

The Director is responsible for:

- Hiring and supervising work crews of high students and their crew leaders
- Identifying, prioritizing and scheduling jobs and materials ordering
- Working with homeowners, towns, state agencies and others to secure proper permits and permissions for jobs
- Maintaining records
- Consulting with homeowners about good watershed protection practices



Conservation Corps Crew, 2008: Front from the left: Sean Strothmann, Jackson Bouchard, Matt Seel, Jon Dumont, Ryan McLeod, Whitney Bushey. In back from the left: Stephen McLeod, Ben Seel, Tim Davis, Isabel Burgess, and Sam Mathes

The Director must:

- Have excellent written and verbal communication skills
- Have technical knowledge and experience in watershed protection
- Be able to establish excellent rapport with high school students, crew leaders, homeowners, and the public in general
- Have excellent organizational skills, creativity and flexibility
- Be able to lead by example & assist crews at times in performing strenuous manual labor.

## Conservation Corps Committee Members

**Wally Buschmann**

**Dave Dawson**

**Bob Joly**

**Roger Shannon**

**Jerry Tipper**

**Jason Bulay**

If you have any questions or would like further information, please contact the BRCA Executive Director at [brca@gwi.net](mailto:brca@gwi.net).

## HOW STEWARDSHIP HAPPENS...

A land trust that accepts and holds conservation easements commits itself to their annual stewardship in perpetuity, to enforcement of their terms, and to building positive land-owner and community relationships to support the land trust's conservation programs and enforcement actions. Acquiring a conservation easement is often such an intensive and climatic experience that future care of the property may seem of secondary importance. Nonetheless, stewardship of its conservation easements must be a top priority of a land trust.

### BRCA Opens new French Mountain Trail

Following a stewardship work day on October 25, BRCA is pleased to announce that a new trail on French Mountain is open to the public. Nearly two dozen volunteers helped to extend the existing trail into a loop trail. The new trail meanders from the ledges near the summit through stands of mature conifers on the western side of the mountain before rejoining the existing trail near the trailhead. Located on the Watson Pond Road in Rome, French Mountain was the first property acquired by BRCA in 1990 and remains a popular hiking destination. The trailhead is located on the Watson Pond Road, 0.7 miles south of Route 27. A short climb up the forested western slope of the mountain leads to granite ledges at the summit, offering spectacular views of Long Pond and the surrounding area. To enjoy the new trail, take the old trail to the summit, then continue south along the ledge until the trail turns to the right and begins descending through the forest. Alternately, turn right about 100 feet in from the road and take the new trail to the summit. The entire loop measures about 0.8 miles and is marked with blue blazes. Happy hiking!

### Stewardship Day at French Mountain

Effective stewardship has many benefits for the land trust.

- It defends the property's conservation resources. Sound stewardship ensures the land trust meets its responsibility to protect the conservation resources in perpetuity.
- It fosters good public relations. Members, past and future donors, and the general public all scrutinize how well a land trust cares for its conservation easements. Ultimately, healthy public support and healthy finances depend on a sound stewardship program.
- It minimizes the impact of inevitable stewardship problems. A land trust that regularly monitors its easements and maintains a working relationship with the land-owner will frequently spot and resolve potential easement violations before they become serious. Time, money and positive public relations are preserved along with the integrity of the land.

Excerpted from *Land Trust Standards and Practices*



In photo (above), Jason Bulay learning from the master, Peter Roderick. BRCA wants to thank all our stewardship volunteers and the Kents Hill School's Outing Club led by Diane Chick for coming on Saturday, October 25th.

## French Mountain Trail

## STEWARDSHIP Cont'

BRCA News ~Winter 2008

### HOW TO GET INVOLVED...

Do you want to become a property steward, or just come on out on a work day: call 495-6309.

### OTHER WAYS TO GET INVOLVED...

**Introduce us to a friend.** Contact us at (207) 495-6039 or e-mail [brca@gwi.net](mailto:brca@gwi.net).

**Sharing our website** with someone who might be interested in the work of the trust is another way to help spread the word.

**Use our properties.** Hike on the Mount Phillip's trail, climb The Mountain, explore Round Top, take a refreshing walk on French Mountain's new loop trail. **Or lead a field trip** - we'll help with the organizing details if you're willing to share your time and enthusiasm.

**Conserve land** if you are interested in donating land or an easement, feel free to contact Land Trust Committee Chair Bill Swan at BRCA. There can be tax advantages to such a donation.

**Transfer stock.** Receive a tax donation and forego paying capital gains on appreciated securities. Call BRCA to explore this option.

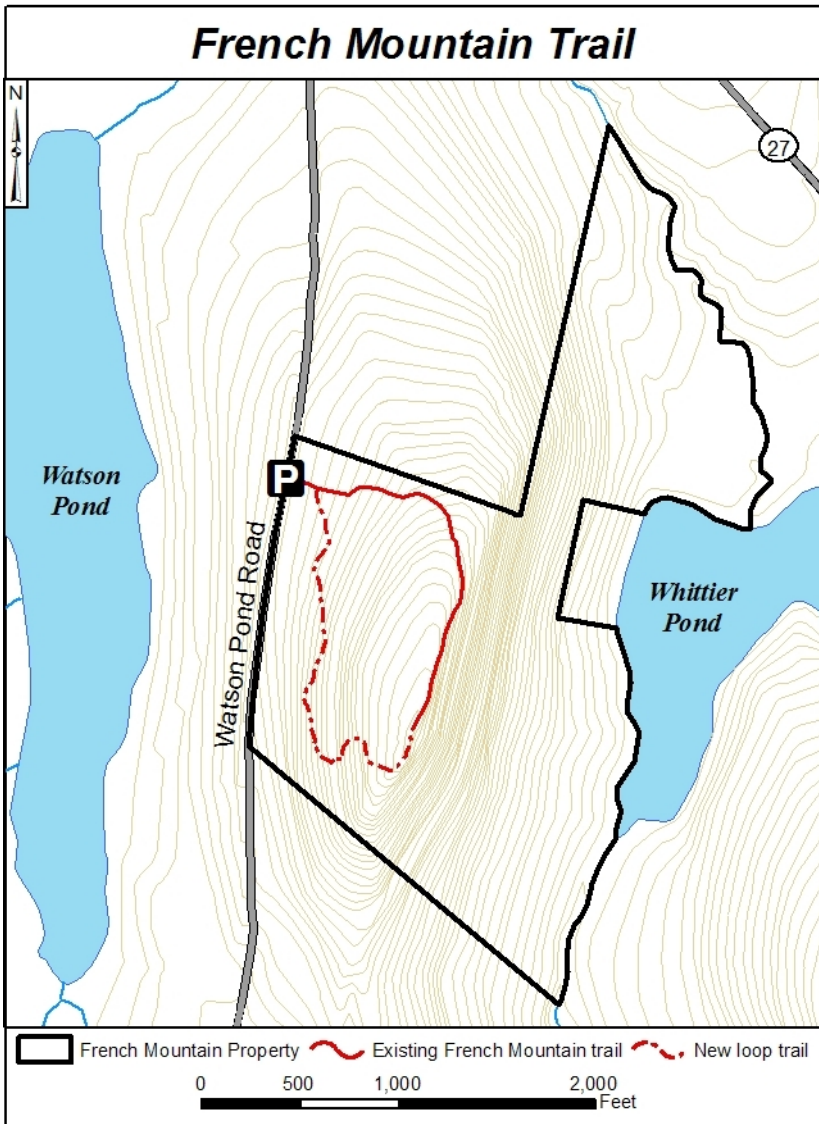
**Cash gifts** are always welcome, and are tax-deductible. You can now donate by credit card on our web site at [belgradelakes.org](http://belgradelakes.org).

A gift of **appreciated stock** to BRCA can bring extra benefits to you—you get a charitable deduction, and you pay no capital gains tax.

If you have a **life insurance policy** that you no longer need, consider making BRCA the beneficiary. The value of the paid-up portion of the policy is tax-deductible.

**Gift memberships** not only help BRCA by expanding the number of people we reach, but also involve your recipients in this worthwhile effort.

Remember BRCA in **your will** and leave a legacy of protecting the lakes, lands, and wildlife of the Belgrade Lakes.



**French Mountain Loop Trail Volunteer Stewards, October 25th:**

Brian Alexander  
 Laura Flight  
 Matt Gauthier  
 Theo Hunt  
 Maureen Maslak  
 Mike Pietrak  
 Margaret Pietrak  
 Peter Roderick  
 John Schooley

Kents Hill School's Outing Club

Ellen Alsop  
 Emma Cameron  
 Diane Chick  
 Cassie Lloyd  
 Nick Loscocco  
 Nate Mitchell  
 Robbie Mosher  
 Kim Nanof  
 Hilary Patenaude  
 Topher Staeltling  
 Sam Stevens

## BRCA Photo Contest Winners and Calendar Submissions

BRCA is pleased to announce the winners of the BRCA Photo Contest 2008:

Rusty Atwood  
 Michael Bernstein  
 Dick Greenan  
 Ken and Barbara Leach  
 Mark LeClaire  
 Beth Nowak  
 Maryjane Shiverick  
 Julie Weaver  
 Bunkie Wilson

Some pictures submitted for the photo contest were chosen for the BRCA Calendar 2009.

Thank you to :

Gail Gorton and John Biddiscombe  
 Michael Bernstein  
 Mel Croft  
 Dick Greenan  
 Julie Weaver  
 Carrie Weaver

The Photo Contest winning photos are available for viewing on BRCA's website [www.belgradelakes.org](http://www.belgradelakes.org)

The 2009 BRCA Calendars are available soon at \$20.00 each or for a \$100 donation to the Kennebec Highlands project while supplies last.

Thank you to Kay Ralston, Nuskin Enterprises Executive, for the calendars. [teachcoastal@gmail.com](mailto:teachcoastal@gmail.com)



### Lake Trust Board Members

**Charlie Baeder**

*Belgrade Regional Conservation Alliance*

**Roy Bouchard**

*Belgrade Regional Conservation Alliance*

**Sandra Lawrence**

*North Pond Association*

**Bill Libby**

*Snow Pond/Messalonskee Lake Association*

**Kathy Lowell**

*Belgrade Lakes Association*

**Maureen Maslak**

*BRCA Milfoil Committee*

**Lenny Reich**

*Member at Large*

**Maggie Shannon**

*Recorder*

**Roger Shannon**

*Conservation Corps*

**Rick Swanson**

*McGrath Pond & Salmon Lake Association*

**Jerry Tipper**

*East Pond Association*

**Peter Kallin, PhD, PWS**

*BRCA Executive Director*

Kayak Race Start, AQUAFEST '08

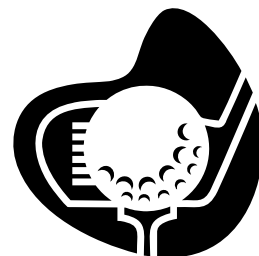
Photo by Dick Greenan

## BRCA Lake Trust

### BRCA Invitational Golf Tourney and Reception Tee Off

**SAVE the DATE:**  
August 19th

Mark your calendars. On Wednesday, August 19th, 2009, BRCA will hold the BRCA Invitational Golf Tourney at the Belgrade Lakes Golf Club. The pro-am golf tournament will benefit the BRCA Lakes Trust, which supports the Conservation Corps, Milfoil Prevention, and other important water quality programs of the Belgrade Lakes.



Stay tuned for more information about the golf tournament.

### After AQUAFEST: A Watershed Appreciation Day

The new annual event, AQUAFEST, was a success. Over 175 people came to the Cocktail Party for the Lakes the Friday evening of Labor Day weekend to view the antique boat display at the Village Inn.

Early Saturday morning, over 100 runners joined in the 5K Race for the Lakes. Runners left from Camp Runoia on the official, timed race on a safe and rolling, out and back course along Point Road. We have the winners listed on our website at [belgradelakes.org](http://belgradelakes.org)

Next, the family-oriented fun began at the Center for All Seasons with the lake associations of the BRCA Lake Trust; Belgrade Lakes Association, East Pond Association, McGrath Pond and Salmon Lake Association, North Pond Association, and the Snow Pond/Messalonskee Lake Association, each leading a lake activity such as "stream critters" or "musical milfoil". Each participant got their passport stamped at each of the five

stations of the Lake Activities Event Course. The Melinda Ann, the Maine Lakes Conservancy Institute's floating laboratory, took families out on the lake to demonstrate water quality sampling techniques.

Over 25 participants did the Fun Run, Walk, Crawl or Creep before the picnic barbecue lunch at noon. Thanks to the Center for All Seasons, lunch was served for all to enjoy.

Eastern Mountain Sports had kayak and GPS clinics in the afternoon before the Kayak/Canoe Race. Onlookers cheered as the racers returned.

The Village was busy with the Farmer's Market, Art Mart, and Bacchus's open house with chocolate tasting. The day rounded out nicely with an open mike at the Union Church Coffee house.

BRCA thanks all of our community members and volunteers for making the day a memorable one.





## Lake Protection Law Passed

An Act to Protect Lake Water Quality (LD 2249), was signed by the Governor on April 10th and is now Public Law Chapter 593. While the law took effect on July 18th, the only change that actually took effect is the change in the stormwater compensation fee language, which increases the fee rate based on the amount of phosphorus removal required. In addition, the law requires that contractors involved in earthmoving activity be certified on the use erosion control measures which will not take effect until January 1st, 2013. The long lead time was proposed to ensure that contractors have adequate time to be trained and certified.

The most controversial part of the DEP's proposed legislation was concerned with the water quality impact of private roads. At the public hearing, there was general

agreement among those who testified that camp roads are a significant problem. How to fix and maintain roads continues to be a tough nut to crack. This section of the bill was changed to a report which is due back to the Legislature by January 15th, 2009. It requires the DEP to evaluate "strategies to diminish the impact of private roads, driveways and boat ramps on lake water quality. The report must include guidance to municipalities on appropriate road standards for the protection of water quality, a sample model ordinance and, in consultation with the Office of the Attorney General, an analysis of the constitutional issues regarding the public purpose doctrine raised by permitting a municipality to adopt an ordinance that includes assessment of an annual fee on property owners for the

construction or maintenance of a private road to prevent the degradation of water quality."

The DEP convened a stakeholder group to provide input on this next report in June. (BRCA's Pete Kallin, Charlie Baeder and Maggie Shannon are members of this stakeholder group.) Work has begun on developing road standards and a request has been made to the Office of the Attorney General concerning the constitutionality of allowing municipalities to assess road impact fees.

Water quality problems associated with improperly built and maintained camp roads have been a source of frustration and debate for many years. There's no guarantee that this latest round of discussions will lead to a break-through, but given the high level of interest expressed by those who have asked to participate, there's reason for optimism that real progress can be made. Stay tuned for future updates.

Excerpted from:  
[NonPoint Source Times](#)  
Vol. 17, Issue 3 Summer 2008

## Local Loon Count

Region 8: No. Kennebec/ So. Somerset Counties		
	Adults	Chicks
East Pond	18	3
Great Pond	43	9
Long Pond	19	1
McGrath Pond	7	3
Messalonskee Lake	31	2
North Pond	0	0
Salmon Lake	5	1

We thank the Maine Audubon Society for gathering this info and disseminating it for us to use.

## Update on the Eurasian water milfoil (EWM) situation

With the discovery of EWM at Salmon Lake by an alert summer visitor, Kurt Lakin, Maine's new Invasive Plant Rapid Response Protocol was executed. DEP and IFW placed a surface use restriction shutting down the cove near the boat ramp, the BRCA stepped up CBI hours, and DEP performed four dives to hand pull plants. Approximately 200 stems were removed. Additionally, the DEP, UMF, and McGrath Pond-Salmon Lake Association (MPSLA) volunteers performed Invasive Plant Patrols (IPP) along the shore of Salmon Lake, the Narrows, and in the stream flowing into Great Pond, while volunteers from the Belgrade Lakes Association performed IPP surveys in the Hatch Cove area of Great Pond near where the stream from Salmon Lake enters. Additional dives and patrols will be performed next spring as the growing season begins. The MPSLA is continuing to meet with the BRCA and DEP to explore alternative actions and develop plans.

### at Salmon Lake

This discovery emphasizes the threat to our lakes from invasive plants. To help manage the CBI and IPP programs, as well as to coordinate training for identification and removal workshops, the BRCA Milfoil Committee will be reincarnated. Maureen Maslak is chairing the committee and soliciting volunteers from each lake association to participate. Please contact the BRCA Office (495-6039) if you are interested in serving on this important committee, which will arrange plant identification workshops and coordinate future IPP patrols in Salmon Lake and Great Pond.

All lake residents are urged to familiarize themselves with the appearance of EWM. Please watch for dates of **Plant Identification** and **Plant Removal** workshops which the BRCA Lake Trust will be scheduling this coming spring and next summer. The more trained eyes we have on our ponds and lakes, the safer our water quality will be.



**Eurasian Water-milfoil**



## BELGRADE REGIONAL CONSERVATION ALLIANCE

171 Main Street  
PO Box 250  
Belgrade Lakes, Maine 04918  
www.belgradelakes.org  
Phone: 207.495.6039  
E-mail: brca@gwi.net



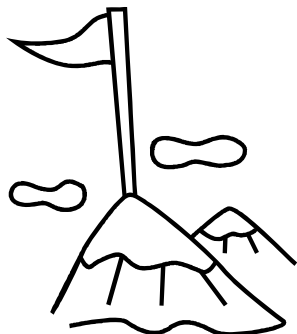
French Mountain overlooking the Kennebec Highlands  
by Dick Greenan

### BRCA's 2008-2009 Fundraising Schedule

Over the coming months, BRCA will be fundraising to support the expansion of the Kennebec Highlands as well as our full range of operations and programs for 2009. As a service to our members, here is a guide to our upcoming appeals:

#### Kennebec Highlands, Phase III Capital Campaign

As detailed in this newsletter, we are beginning our campaign to raise \$595,000 to match Land for Maine's Future funding and add over 1,000 acres to the Kennebec Highlands. Donations to this campaign will be used to purchase land, cover acquisition costs, and provide for the long-term stewardship of the Kennebec Highlands.



#### Conservation Corps 2009 Appeal

BRCA members who have supported the Conservation Corps in the past or have had the Corps do work on their property in recent years will receive our appeal to fund the Corp's erosion control work in 2009. The Conservation Corps depends on your support to continue protecting the water quality of the Belgrade Lakes; all funding for this program comes from this appeal and other dedicated funds, not from memberships or other donations to BRCA.

#### Membership Renewals

BRCA sends out membership renewal reminders on a rolling basis; each year you will receive a reminder during the month you initially joined BRCA. For some members, this will be close in time to one of our other fundraising efforts. Membership dues are used to cover the operating costs of BRCA and are separate from our other appeals; you will continue to receive membership reminders even if you donate to one of our other appeals. If you would like to send a single check in response to multiple appeals, however, we are happy to accommodate you; contact us at the BRCA office to let us know how you would like your donation apportioned.

BRCA greatly appreciates your support of our efforts to protect the land, water quality, and natural heritage of the Belgrade Lakes region, and we hope that you will continue to support us and our programs. Please contact us with any questions or feedback.

