



## BELGRADE REGIONAL CONSERVATION ALLIANCE



BRCA conserves the lands, water quality, and natural heritage of the Belgrade Lakes Watershed.

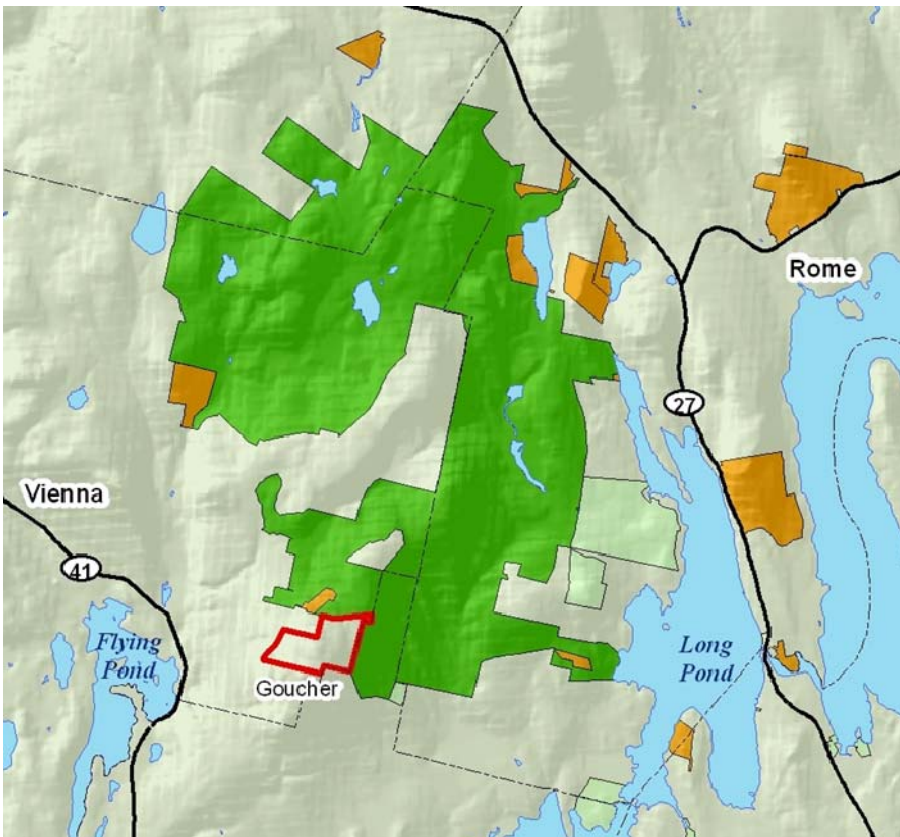
### Kennebec Highlands Phase III Update

We are pleased to announce that we are making excellent progress in meeting or exceeding our goals in terms of adding conserved land to the existing Kennebec Highlands. In August, we purchased the Goucher Parcel, 180 acres on the top of McGaffey Mountain, the highest point in Kennebec County. This parcel has been turned over to the Maine Department of Conservation for integration into the Kennebec Highlands. At press time of this newsletter, we are poised to close on another 28 acres near this parcel. To date, we have successfully added over 580 acres to the Kennebec Highlands and are in negotiations on an additional 500 fee acres and 463 acres of conservation easements in New Sharon if we can raise the necessary funds. If everything falls into place, these deals will result in conserving over 1500 acres during this project, well in excess of our goal of 1000 acres.



Above: Lower Basin Long Pond as seen from the overlook on Goucher Parcel.

Because of the current economic climate, the land conservation side of the project is going very well. We are able to negotiate agreements on attractive parcels at bargain prices. On the other hand, the fundraising side of the project is going much slower than we would like. To date, we have been able to execute deals with LMF funds by using some of our



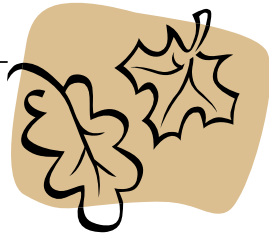
pre-acquired land as "match," using funds provided by generous grants from the Henry Janssen and Davis Conservation Foundations, and taking a no interest loan from the Norcross Wildlife Foundation. That loan must be paid back in November. We have applied to several foundations that have historically been very supportive of our efforts that are currently unable to help. We are continuing to pursue those opportunities but we need help from you, our members. If you are able, please consider a special tax-deductible gift or pledge for our current campaign. We are still over \$575,000 short of our \$695,000 goal for this campaign. If you have appreciated stock or are taking mandatory distributions from an IRA, there are some very attractive options currently available. Please contact our Treasurer, Dick Greenan, at 495-3740 or Executive Director, Peter Kallin, at 495-6039 for details. Please help us take advantage of current opportunities to protect these special places before it is too late.

(See campaign thermometer, next page.)

## President's Column

Winter is fast approaching, the last fall colors are brown, and the watershed has quieted down. Summer residents have been packing up and heading south. Hunters are out and skiers are waiting for snow. We at BRCA have had a full plate of programs this year and have accomplished most of our goals. Land has been acquired, and the lakes have been protected. Its time to catch our breath.

The lull in land development has meant that land has been available to buy. Raw land prices have not declined substantially, but sellers have been willing to sell. This has been good for the Kennebec Highlands expansion project in that we have been able to acquire key parcels. We have additional opportunities before us now. Your generous support of this project will build the legacy that the Kennebec Highlands represents. Please consider a year-end gift or a pledge for 2010. (And, call me if you would like a tour of any of the properties we have recently added to the Kennebec Highlands.)



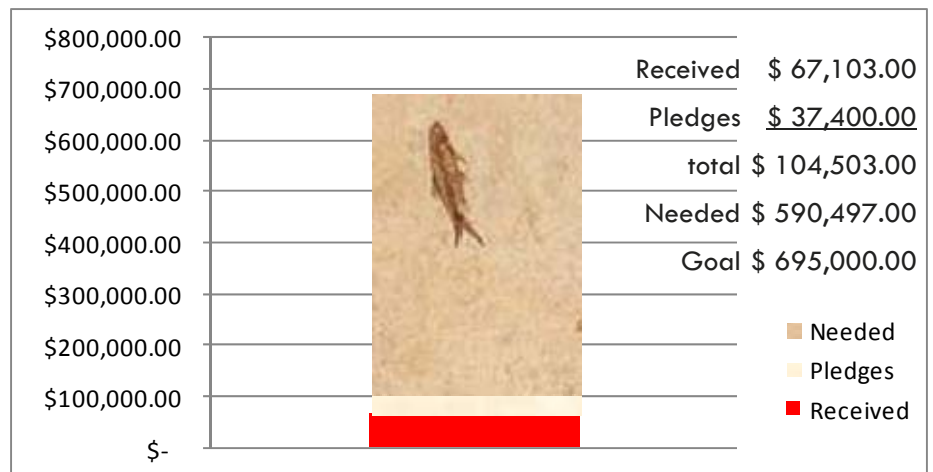
## Executive Director's Column

As I write this in the reflection of brilliant fall foliage from the stream outside my office window, I am once again reminded that "to everything there is a season." Our busy summer of Education and Outreach events, Conservation Corps projects, Courtesy Boat Inspectors, and Invasive Plant Patrols described elsewhere in this newsletter is becoming a dim memory. The hustle and bustle of identifying small water creatures and aquatic plants, or answering shoreland zoning questions for drop-in office visitors has been replaced with budget meetings, reviewing watershed management plans, making sure all our properties and conservation easements are properly stewarded and monitored and making sure next year's programs are adequately staffed and funded.

Lake programs performed at their best this year, a testament to dedicated staff, volunteers, and the public. More than one "save" was made by the public this year, preventing more invasive plants from getting into the lakes. The seriousness of this threat was made especially clear by the milfoil infestation at Salmon Lake. The Harold Alford Foundation provided a substantial gift to the lakes which leveraged match from other donors. Thank you all.

In addition to the land and lakes, people make this area. This year we have seen a singular effort to get the Docks 2 Doorways campaign launched by our lakes partner, the Belgrade Lakes Association. This project to buy and redevelop two properties in Belgrade Lakes, including our office space, is about building community. Other initiatives include education and history programs that connect people to the land, to nature, to each other, and to our shared past. At the heart of these efforts is heart: the effort to bring people together and build the legacy of this community. Happy holidays, Charlie Baeder

### Kennebec Highlands Phase III Capital Campaign



While many things change, some things never change. As the French say, "Plus ca change, plus ca le meme chose." We still need to raise money for all our programs, especially our Kennebec Highlands Phase III Project. Because of prevailing economic uncertainties, there are tremendous opportunities right now that we would like to take advantage of but we can't do so without the capital in hand. As our friends in public radio like to say, "Now, more than ever," we need YOUR support. Please call me or log in to our web site to see how you can help protect important parts of the landscape before it is too late. With the recent gains in the stock market, perhaps you have some appreciated stock in your portfolio. Donating it to BRCA would allow you a charitable deduction for the full value while eliminating any potential capital gains tax- a double benefit!

We are still continuing to try to expand our membership and encourage more volunteers to become involved in our programs. Dave Axelman's newly rejuvenated Stewardship Committee has many opportunities to come out and meet some of your fellow members while completing worthwhile projects. We are looking for new members who are a lot like our current members- in love with this part of Maine and concerned enough to help protect it. The best place to find those people is among the friends and families of our current members. If you have a friend or family member who shares your conservation ideals who is not yet a member, please ask them to join or consider giving them a gift membership. Any member who refers a new member will receive a special gift as a token of our appreciation. Please contact me or stop by the office if you have any ideas about how to make BRCA more responsive to your needs. All the best, Peter Kallin





Fall is one of the most beautiful times of year in the Kennebec Highlands. Mother Nature decorates the hills with one last splash of color before the blanket of winter white comes. I walked up French Mountain for some inspiration in writing this article and thought about all of the visitors that the Kennebec Highlands had welcomed earlier this year.

This summer the Education and Outreach Committee scheduled lectures, canoe trips and hikes to encourage folks to get outside and enjoy the land and waters of the region, in turn hopefully soaking up appreciation and spreading the word of the importance of our lakes and conservation lands. Attendance was astounding! Nearly 300 people attended the lecture series with topics ranging from loons to historic photos. 30 people were guided on canoe trips. Close to 100 more participated on walks. 40 summer camp youngsters enjoyed night hikes or canoe trips we led. That's a far cry from 5 years ago when hikes were just beginning to be offered!

This year we are planning to expand our outings into the winter months. The following activities are in the works to be scheduled at least once beginning in January:

- XC Skiing
- Ecology Scavenger Hunt
- Winter Hiking
- Snowshoeing
- Winter Bud I.D.
- Map and Compass for kids
- Winter Bird Watching/Small Animal Tracking

Keep an eye on your email and the website for upcoming dates!!



In an effort to reach more people with an understanding that our pre-determined schedule may not always match yours, we are extending an invitation to get a group of friends together (minimum 6 people) and give us a call! We'd be happy to try to arrange for someone from BRCA to lead your group! Just give us a week's notice, please.

Expanding our activity scheduling brings a need to expand our volunteer base. Volunteers are needed for future events. If you have experience leading trips, botanical or natural history expertise, knowledge in outdoor skills or pursuits, we want to know! Even a gift of baking is welcome for assisting with lecture series or event refreshments. Please call our office if you think you could help.

As you enjoy this late fall and winter, keep us in mind! We are always looking for new ways to meet member interests. Please feel free to send an email or give a call with requests or ideas for future events. Fill out the survey to help us better understand your needs. Go to the survey page [www.surveymonkey.com/s.aspx?sm=NG1J\\_2f5\\_2fcXQ2FdI5Fru79Q\\_3d\\_3d](http://www.surveymonkey.com/s.aspx?sm=NG1J_2f5_2fcXQ2FdI5Fru79Q_3d_3d)

The Education and Outreach Committee meets monthly and welcomes new participants!

## Colby's Freshman Students on a Mission: BRCA Trail Day



BRCA thanks Colby College's Freshman Orientation outing members: Katherine Gagnon, Will Chen, Nate Krump, Anne Hebson, Matt LaPine, Jennie Buskin, Emily Shankle, Abigail Myers, Allison Seidel, Tyrell Smith, Melanie Brown, Josie Bazerore, Jillian Sullivan, and Peter Serina.

Around 20 first year Colby students joined with BRCA on September 3<sup>rd</sup> to do trail work on our Sander's Hill loop trail. For them it was one of their first experiences as Colby students, still adjusting and getting comfortable with the idea of even being a college student. For BRCA, an opportunity to outreach and meet public faces while making improvements that will aid hikers navigating the trail.

The students arrived at the BRCA office for a quick introduction to our purpose and programs and then headed back to the vans and out to Sander's Hill. BRCA volunteers and staff supervisors included Dave MacLeay, Theo Hunt, Peter Kallin, and Sarah Zazzaro. Our goal for the day included putting in two sign posts, re-painting faded blazes, and clearing obstructions. The numbers that we had made the difference; on our own we surely wouldn't have been able to carry the 40 lb bag of concrete and other tools up a rocky trail and complete maintenance on most of the trail.

Appreciation of the day seemed mutual as the students seemed to really enjoy their time in the outdoors. After all, what better way to cure the first year jitters than a walk in the woods on a warm and sunny September day?

## Conservation Corps - Want a clean lake? Wondering what's being done to help and what you can do? The BRCA Conservation Corps is leading the way.

The Belgrade Lakes Watershed covers 180 square miles in 13 towns, and anything that happens in this area affects the water quality of the lakes. Runoff entering ditches and streams throughout this area makes its way downstream to the lakes, and any nutrients it carries come with it. By preventing soil erosion, minimizing surface runoff, and planting buffers along tributary streams, property owners far from the shorefront can help protect water quality in lakes and streams, and the Conservation Corps can help with advice and free labor. Anyone interested in having the Conservation Corps help with a project in 2010, whether they live on one of our lakes or upland within the watershed, should contact Sarah Zazzaro at the BRCA office or via email at [brcacc@gwi.net](mailto:brcacc@gwi.net).

### Bottom line:

- Phosphorous is in soil. When storm-water erodes soil, it gets into our lakes, decreasing water quality and increasing the chance and number of algal blooms and Gloeotrichia.
- The BRCA Conservation Corps works with homeowners, free of charge, to decrease erosion on your property and help filter stormwater to decrease phosphorous runoff.

A look at this past season: The BRCA Conservation Corps completed its 14<sup>th</sup> year of operation in 2009, completing 64 projects on 44 sites over the course of the summer. See the figure below for project locations.

	Belgrade	Rome	Smithfield	Oakland	Sidney	Total
Great Pond	12	16	-	-	-	28
Long Pond	4	8	-	-	-	12
Messalonskee Lake	1	-	-	3	3	7
East Pond	-	-	1	3	-	4
Salmon-McGrath	-	-	-	11	-	11
North Pond	-	-	2	-	-	2
Total:	17	24	3	17	3	64

Each project is unique to the property. Some properties need placement of rocks along the shoreline (riprap) to stop shoreline erosion; some need garden buffers or rain gardens to slow and filter storm water runoff; rubber razor blades and box culverts divert water into existing vegetated areas acting as buffers; erosion control mulch holds soil in place and lasts longer than ordinary mulches; and infiltration trenches address erosion from water shunting off roofs.

**Before:** A project site on Long Pond where runoff from the driveway ran straight down the path to the lake without filtering or speed reduction. Phosphorus flowed unabated into the lake.



**After:** The Conservation Corps placed erosion control mulch and plantings (buffer). Runoff from the driveway is captured in the buffer, allowing it to infiltrate into the soil. The path has been defined with stones and heavily mulched, providing a stable access point to the shoreline.



**Old fiberglass boats (working or non working)**

**Why ?** Receive a tax deduction and save on dump fee, the Conservation Corps will use them to transport rock used for shoreline erosion prevention.

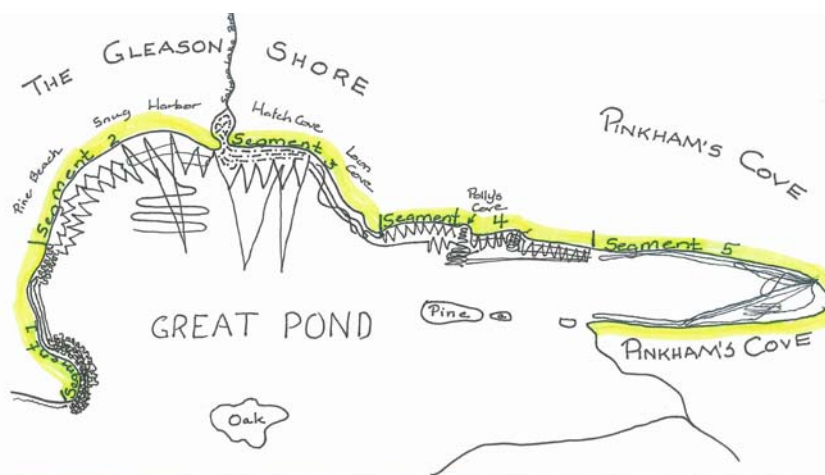
**How ?** Contact Sarah Zazzaro at BRCA, 495-6039.



## IPP Surveyors: Thank Them When You See Them!

Volunteers are the heartbeat of all nonprofits, but it's a very great pleasure to honor a special group of lake stewards who answered an urgent plea late this summer. At the end of August, when it became clear that Eurasian watermilfoil had matched the State's best efforts to beat it in Salmon Lake, the Lake Trust's Milfoil Committee put out an emergency call for help. Suddenly, we realized all of Gleason Shore and Pinkham's Cove was at high risk of infestation and an organized survey of this large area of Great Pond was needed, fast. Labor Day was round the corner; vacationers were getting the most out of the last of summer, and many had already closed camp. Nevertheless, 30 people from four lakes in the Belgrades answered the call. They arrived quietly, perhaps a little sleepily, at 7:30 in the morning in kayaks, canoes, Zodiacs, and snorkel gear. They braved less than ideal conditions. They completed 5 surveys in 5 days; and best of all, they found no invasive plants.

These folks deserve our warmest thanks: Cheryl Abbott, Michael Bernstein, Joanne Cattley, Richard Dennis, Tom Doolittle, Brett and Jane Eberle, Dick and Betsy Enright, Dick Greenan, Saskia Grody, Chris and Denise Hatch, Rob Jones, Peter Kallin, Lee Lenfest, Don and Lynn McBeth, Jocelyn Mitchell, Douglas Morrione, Merrie Ed Omsberg, Kay Ralston, Lea Ramirez, Joe and Margaret Reisert, Maggie Shannon, Richard Sharf, Jackie Tanner, Rob True, and Vicki Webster.



Above: Map of the IPP Survey of Gleason Shore and Pinkham's Cove.

## Holding our Breath 'til Spring

### Treating Eurasian Water Milfoil in Salmon Lake

On September 10<sup>th</sup>, 2009, Maine's Department of Environmental Protection (DEP) took the extraordinary step of applying the herbicide 2,4D to the waters of Salmon Lake. Treatment results appear promising at this date, but we won't know until spring if the State's bold action has rid the lake of a pestilential invader and reduced the threat of transfer to lakes nearby and across the state.

Under the direction of John McPhedran, DEP's invasive aquatic plant "czar," the State dedicated maximum resources to controlling Salmon's infestation by mechanical means in both 2008 and 2009. The natural resource agencies moved with unprecedented speed to apply a surface use restriction to the infested cove as soon as the plant was identified last summer, and DEP plunged immediately into hand pulling the sparse growths throughout summer and into fall 2008. As soon as the water warmed this past spring, teams of DEP divers took to the water and returned repeatedly, removing plants by hand and applying light-blocking bottom mats to prevent growth.

### Risk analysis

In May and June 2009, McPhedran's team removed 60 plants, then 27, then 39, then 79. On July 1, when 119 plants were found, DEP acknowledged the plants were holding their own, and chemical control methods began to be considered. For the agency which protects surface waters and aquatic habitat, the choice of herbicide application was difficult but seemingly unavoidable. The Belgrades are highly popular, heavily trafficked lakes; if Eurasian watermilfoil were to escape its present confinement in Salmon's outlet cove, all Maine lakes and ponds would be under much higher threat levels. Underlining this point, Belgrade Regional Conservation Alliance (BRCA), in its end of the summer report, posted the most boat inspections in its history; more than 10,000 visitors launched boats at ramps monitored by BRCA's Courtesy Boat Inspectors this summer. And to top that off BRCA scored 4 "saves," this summer, as well. In other words, our inspectors prevented 4 banned plants from entering our lakes on 4 occasions this year.

### Shared responsibility

The State has been the major player in containing this infestation so far. We are appreciative and eager to see the results next spring, but no one who cares for these lakes should assume that containing this lake-wrecker is up to the State, alone. In all likelihood, the plant will persist in Salmon, mechanical and chemical controls will continue to be needed in the outlet cove, and the consequent threat of contamination will remain extremely high for all the Belgrades. Only if all who use the lakes learn to spot this distinctive, deceptively pretty plant and keep a vigilant eye out for its appearance, can we hope to prevent new colonies from planting themselves where we don't want them.



Above: Judy Potvin and Leslie Latt exhibit the invader.

# Long Pond Watershed Grant Update

The BRCA, in partnership with the Kennebec County Soil and Water Conservation District (KCSWCD), has been administering a Section 319 Nonpoint Source (NPS) grant to reduce phosphorous running off into Long Pond. Named for the Section of the Federal Clean Water Act that provides the funding for these grants, the grant was awarded to BRCA by Maine DEP in a competitive process last spring. Under the grant, the BRCA and KCSWCD have been reaching out to watershed stakeholders such as road associations, lake associations, and municipalities to provide cost share funding to implement best management practices (BMP) such as improved gravel roads, riparian buffer plantings, and s pervious paver demonstration project at Day’s Store.

To date, the grant has provided cost share funding for two new culverts on Tracy Cove, Drive, a new culvert and up-graded section of road on Timber Point, three new culverts and an upgraded section of road at Lakewood Estates, an improved parking lot, infiltration trench, and rain garden at the Belgrade Beach on Lakeshore Drive, and a section of pervious pavers in the driveway at Day’s Store. Additionally, a workshop is being planned for road commissioners and municipal officials on environmentally sensitive maintenance and BMPs for dirt and gravel roads. If your road association has a potential project you would like to implement, or if you are interested in attending the workshop, please contact Peter Kallin at 495-6039. Please stop by to check out the paver demonstration and rain garden at Day’s Store, next time you are in the village. Then stop by our office across the street so we can get to know you better!

Before: Eroding road surface and totally plugged culvert at Lakewood Estates.



After: New, properly armored culvert and resurfaced, crowned road.



Below: Runoff infiltrating into pervious pavers at Day’s Store.



“THEN STOP BY OUR OFFICE ACROSS THE STREET (FROM DAY’S) SO WE CAN GET TO KNOW YOU BETTER!



## LakeSmart Pilot Program

Robert Frost liked to say, "It takes a lot of in and outdoor schooling to understand my kind of fooling." The same can be said for living well with lakes. Lakesmarts aren't part of our basic human equipment, and living lightly on the land is something of an acquired skill. 200 years of forestry, agriculture and recent rapid development have left their mark on the Belgrades. We know this, and we also know that if our grandchildren are to know the joys these lakes give us, something about the way we go about our daily lives will have to change. We're just not so sure what those changes might be.

Enter LakeSmart, a pleasant little program that rewards people like you and me for doing the right thing by our lakes. Created for the lakeside homeowner, LakeSmart gives a pat on the back to those who do what they can to protect water quality. It's a person-to-person effort to explain the ins and outs (the mostly downs) of runoff, and how each of us can make the little changes that will add up to a big difference when added all together over time.

In our watershed, we've had a trial using volunteers to extend LakeSmart this summer. In June, a number of folks were taught to evaluate properties on the LakeSmart model and make suggestions to homeowners who asked for help. Over the course of the summer, these trainees have done a lot of site visits and made many recommendations for LakeSmart Awards and Recognitions. In this, the first of a three year test period, our volunteers completed 34 property surveys, resulting in recommendations for 22 LakeSmart Awards and 6 LakeSmart Recognitions. A few Awards have been given out, but most will be celebrated at Lake Association Annual Meetings next summer.

The program was active on four lakes. Volunteers who made the program a success were Mel Croft on East Pond; Mark Heuberger, Michael Bernstein, Pat Donahue, and Maureen Maslak on Great Pond; Maureen Maslak on Long Pond; and Dick and Betsy Enright on Salmon Lake.

We expect this volunteer-led program will grow over the years; we see it as the best way to make needed change.

Property owners should be assured that LakeSmart evaluations are not judgmental, pass/fail kinds of things. On the contrary, we're all learning, all the time, about what makes good practice. Over time, any property can become more lake friendly, and that's what we're really after. Through LakeSmart, the Lake Trust hopes to establish comfortable working relationships with property owners, helping create awareness about lake friendly living and assisting homeowners with information, technical advice, and Conservation Corps muscle.



For more information about LakeSmart in the Belgrades, please call Sarah Zazaro, Conservation Corps Director, at 207-495-6039.

## Pete's Corner: Letters to the Editor

Dear Pete,  
Thank you so much for accompanying all of us on the nature walk up Mt. Phillip. Your knowledge and experiences are invaluable. Also, thank you for the Invasive Plant Patrol trip to Bog Stream on North Pond. As it is to all, preventing milfoil in North Pond and any more Belgrade Lakes is a high priority to me! Sincerely, Linda Rice, North Pond Assoc.

Dear Peter (+ whoever opens the mail!),  
I hope this small donation is in time to meet the (Harold Alfond Foundation's) challenge grant! Thanks for all the work you do, we have very much enjoyed the new trails + are so glad much of the land is being protected.  
Marge Shirosky  
(Watson Pond in summer wks)

A note from Linda Woods:

Hello,  
I thoroughly enjoyed my nature walk with Sarah and geology walk with Mel. Thank you for hosting these events. My walks on your trails have been pleasurable as well.  
Linda

Dear Pete,  
I am writing to you to thank you for your quick response on my erosion problem and all the hard work everyone on your team put in to complete the job in such a short period of time. Also would you please thank John Blais for me for obtaining the permit so fast.  
I was so impressed with the quality of work, determination, and work ethic of each and everyone on your team. Please thank Pete, Izzy, Sam, Sarah, and all the Conservation Corps team for working in such tough conditions. They stood in running water up to their calves, endured constant bug bites with some rain thrown in, and carried or wheeled all the rock and mulch by hand. Never complaining, very impressive.  
The whole team conducted themselves in a professional manner and were so polite to me and my wife. I was so thrilled to work with such a great group of young adults. You and their parents should be very proud of the work they are doing. I know Donna and I are. Please share this letter with the entire team. I will certainly recommend and praise the BRCA to any of my neighbors that need help with their lots. Gratefully yours: Les Graves

JOIN BRCA ON FACEBOOK ! Just visit the link below and be our friend to show your support for BRCA.

Page 7 <http://www.facebook.com/home.php?#/pages/Belgrade-Regional-Conservation-Alliance/164579496740?ref=nf>

**SPECIAL RECOGNITION:**

**DICK & BETSY ENRIGHT,  
DOUG MCCAFFERTY**

Executive Director, Peter Kallin, and the Lake Trust Committee of the BRCA wish to give special recognition to three Salmon Lake residents: Dick and Betsy Enright, and Doug McCafferty for outstanding action to protect and preserve the waters of their favorite lake.

**Special Recognition from  
a Grateful Lake Trust**

For two years now, Dick and Betsy have organized (and largely conducted themselves) invasive plant surveys of the shoreline of Salmon Lake outside of the infested outlet cove to make sure the plant hasn't spread beyond its known location. Courtesy Boat Inspectors themselves, they encouraged the McGrath Pond/Salmon Lake Association Board of Directors to become trained and put in time at their ramp.

Doug and his wife Candee run Whisperwood Cottages, a favorite spot for fishermen. Doug served on the Governor's Task Force for Invasive Aquatic Species and was alert to the threat of invasives early on. He makes sure that all boats using his facility are thoroughly inspected. This summer, he stopped invasive plants from entering Salmon Lake at his private boat launch on two occasions. In short, Doug accounted for half of all documented "saves" recorded in the Belgrades this summer.

**Thank you from a grateful Lake Trust!**

**Milfoil 2009 Season Report: Courtesy Boat Inspection Program**

The BRCA Courtesy Boat Inspection (CBI) program, overseen by Milfoil Committee Chair, Reen Maslak, and supervised by CBI Coordinator, Jason Bulay, had a record year. BRCA paid inspectors and lake association volunteers performed 10,330 inspections this summer and had four confirmed "saves" of stopping invasive plants entering the Belgrades. Curly leaf pondweed was stopped at Long Pond by Lila Zanicoli, fanwort and variable milfoil stopped at East Pond by Evan Dewdney of Alden's Camp, and fanwort, variable milfoil, and Eurasian milfoil stopped (twice) by Doug McCafferty of Whisperwood Camps. Doug deserves special thanks, not only for his two "saves" but for his 1688 hours of volunteer time in which he performed over 300 inspections at Whisperwood Camps. Below is this year's total summary:

	Lake	Inspections			Fragments found		Confirmed "Saves"		
		Hours	Entering	Leaving	Total	Entering		Leaving	
<b>Paid Inspections</b>	Great Pond	807.75	1580	861	2441	3	8	1	
	Long Pond	768	1124	645	1769	3	1		
	North Pond	507	462	308	770	1	6		
	East Pond	825.75	536	311	847	1	2		1
	Salmon Lake	827	478	376	854	2	1		
	Messalonskee/Oakland	680	1019	776	1795	3	5		
	Messalonskee/Sidney	458	633	612	1245	1	1		
	Whisperwood	0	0	0	0	0	0		2
	<b>Total Paid Inspections</b>	<b>4873.5</b>	<b>5832</b>	<b>3889</b>	<b>9721</b>	<b>14</b>	<b>24</b>		<b>4</b>
	<b>Volunteer Inspections</b>	Great Pond	14	25	15	40	0		0
Long Pond		15.5	15	7	22	0	1		
North Pond		26.25	16	21	37	0	4		
East Pond		62.75	44	48	92	0	1		
Salmon Lake		30.25	27	17	44	0	0		
Messalonskee/Oakland		4	9	11	20	0	0		
Messalonskee/Sidney		32	30	17	47	0	0		
Whisperwood		1668	156	151	307	3	12		
<b>Total Volunteer Inspections</b>		<b>1852.75</b>	<b>322</b>	<b>287</b>	<b>609</b>	<b>3</b>	<b>18</b>	<b>0</b>	
<b>Combined TOTALS</b>		<b>6726.25</b>	<b>6154</b>	<b>4176</b>	<b>10330</b>	<b>17</b>	<b>42</b>		



## STEWARDSHIP

### Wanted: More people to be involved with BRCA trails and properties

BRCA News  
~ Fall 2009

The BRCA stewardship committee is looking for volunteers who want to get involved and be active contributors. The goals of the stewardship committee are:

- To make BRCA lands available for public use
- To preserve the major conservation values of BRCA properties and easements
- To maintain a large pool of volunteers with diverse skills and interests



Above: Volunteers put up a new kiosk on French's Mt. Trail. Left to right: Dave Axelman, Roy Bouchard, Pete Kallin, and Warren Balgooyen.

Below: Volunteers dig post holes for new French Mountain sign location.

Ann Dorney (left) and Helen Balgooyen (right).



Involvement on the committee can be different for each individual. The only requirement is to be willing to help. Typical involvement can include:

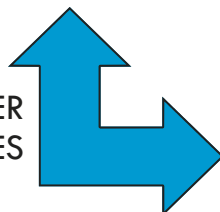
- Trail and property maintenance
- Invasive species removal
- Kiosk work
- Property boundary marking
- Documenting conservation values and functions
- Development/writing of management plans
- Map design
- Fundraising; grant writing
- Annual monitoring visits to easement properties
- Etc...new ideas are always welcome!

If you have questions or are considering becoming a stewardship committee member, please contact Sarah Zazzaro at 495-6039 or [brcacc@gwi.net](mailto:brcacc@gwi.net). The committee normally meets the 4<sup>th</sup> Thursday of each month from 6 to 7 PM at the BRCA Office in Belgrade Lakes.



Above: Kiosk construction with smiles! We thank BRCA board members, David Axelman (left) and Roy Bouchard (right), for their time and effort.

VOLUNTEER  
OPPORTUNITIES



Save the Date  
**AQUAFEST IS BACK!**

July 10, 2010

**FUN AND  
GAMES FOR  
ALL AGES**





## BELGRADE REGIONAL CONSERVATION ALLIANCE

171 Main Street  
PO Box 250  
Belgrade Lakes, Maine 04918  
[www.belgradelakes.org](http://www.belgradelakes.org)

Phone: 207-495-6039  
Fax: 207-495-6039  
E-mail: [brca@gwi.net](mailto:brca@gwi.net)

To view the BRCA Newsletters  
in full color with active  
hyperlinks visit our website

## Board of Directors

**Charlie Baeder**  
*President*

**Roy Bouchard**  
*Secretary*

**Dick Greenan**  
*Treasurer*

**David Axelman**  
*Member at Large*

**Warren Balgooyen**  
*Member at Large*

**Mel Croft**  
*East Pond Association*

**Pat Donahue**  
*Belgrade Lakes Association*

**Jane Eberle**  
*Belgrade Lakes Association*

**Don Mairs**  
*McGrath Pond & Salmon Lake Association*

**Jack Schultz**  
*Belgrade Lakes Association*

**Maggie Shannon**  
*Belgrade Lakes Association*

**Bill Swan**  
*Member at Large*

**Peter Kallin, PhD**  
*BRCA Executive Director*

## LAKE TRUST FUNDRAISING 2009 REPORT

**Golf Tournament-** On August 19, 2009, BRCA held the Harold Alfond Memorial BRCA Pro Am Golf Tournament at the Belgrade Lakes Golf Club to benefit the Belgrade Regional Conservation Alliance's Lake Trust and its water quality programs for all the Belgrade Lakes. These programs include the BRCA Youth Conservation Corps and Milfoil programs as well as the water quality programs of East Pond, North Pond, Great and Long Ponds, Salmon Lake and McGrath Pond, and Snow Pond/Messalonskee Lake.

In conjunction with this tournament, the Harold Alfond Foundation generously committed to a challenge grant of \$25,000 to the BRCA if we could raise that amount within 60 days of the challenge (August 19<sup>th</sup> to October 19<sup>th</sup>). BRCA is pleased to report that thanks to the inspiration provided by this challenge, BRCA was able to raise nearly \$27,000 for our Lake Trust programs during that period. The Belgrade Regional Conservation Alliance (BRCA) Lake Trust is a collaboration of the area lake associations (Belgrade Lakes Association, East Pond Association, North Pond Association, McGrath Pond-Salmon Lake Association, Snow Pond-Messalonskee Lake Association), the Conservation Corps, the Milfoil Program and the BRCA Watershed Program. The mission of the Lake Trust is to help the Lake Associations in their efforts to improve the water quality of the Belgrade Lakes. BRCA thanks you, our supporters, sponsors, and volunteers, and the Harold Alfond Foundation for your continued support of BRCA's efforts.

**5K Race for the Lakes-** On September 5, 2009, BRCA held the second annual 5K Race for the Lakes. We had almost 70 runners show on that beautiful Saturday morning. Some of our local runners did very well with David Roberts of Mount Vernon taking first place overall and our very own Sarah Zazzaro (Conservation Corps Director) of Belgrade winning the women's division. Thank you to the runners, sponsors, and volunteers for supporting BRCA.



Golf Tournament Coordinator, Jerry Tipper (left), and our executive director, Pete Kallin (right), handing prizes to the Harold Alfond Memorial BRCA Pro Am Golf Tournament winners.