



# BELGRADE REGIONAL CONSERVATION ALLIANCE

## Land Trust Edition



BRCA conserves the lands, water quality, and natural heritage of the Belgrade Lakes Watershed.

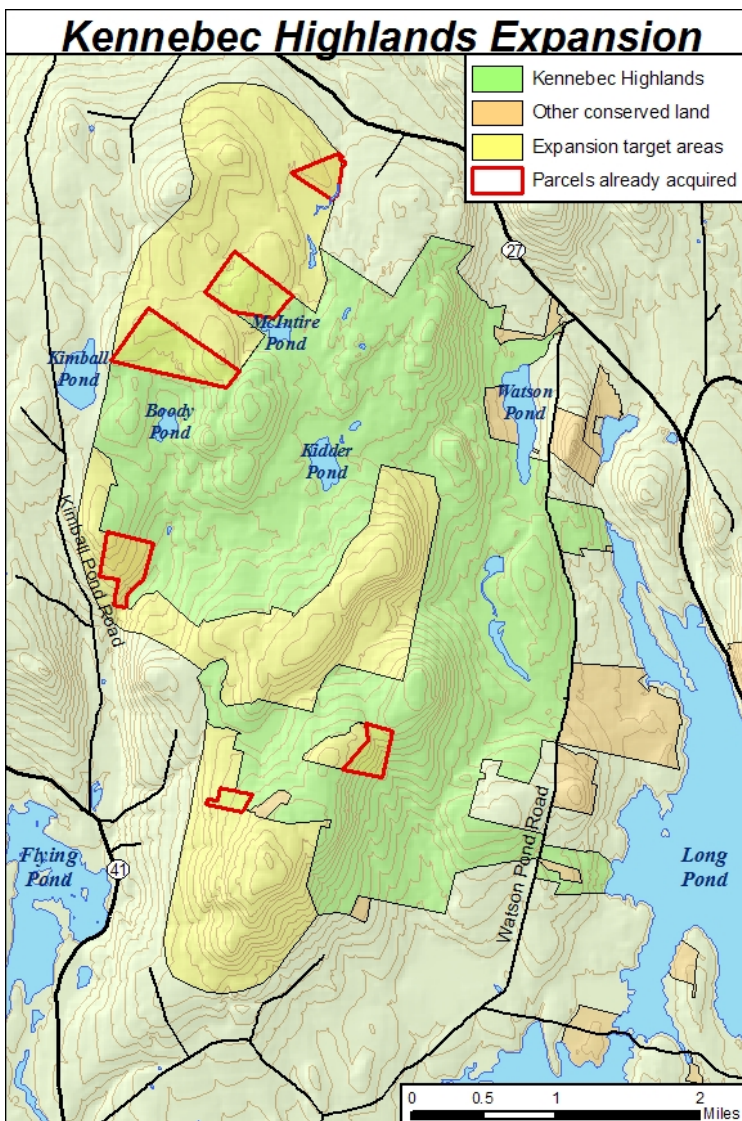
### Kennebec Highlands Phase III Update

In our Winter 2008 Newsletter, we described our goals for Phase III of our Kennebec Highlands Project. I am pleased to announce that we are making excellent progress in meeting or exceeding our goals in terms of adding conserved land to the existing Kennebec Highlands. In December, we purchased 77 acres on the top of Berry Hill in Vienna from Harold and Kathleen Kelley, long time BRCA members. This land, which abuts the western boundary of the existing Kennebec Highlands, will be owned by the BRCA and managed as part of the Kennebec

Highlands under a Project Agreement with the Maine Department of Conservation (DOC). At the end of February, we had a complex closing in which DOC purchased 106 acres next to McIntire Pond in New Sharon from John and Suzanne DiStefano, BRCA purchased 5.2 acres in Vienna from Richard Krause, and the BRCA transferred the Krause land, along with 40 acres previously purchased from Mr. Krause, and 19 acres in Vienna previously purchased from Minerva Chalaby to the DOC as part of our "match" for our Land for Maine Future (LMF) grant we received last summer. In April, BRCA sold the 140-acre Gordon Parcel to the DOC.

To date, we have successfully added over 377 acres to the Kennebec Highlands and are in final negotiations on an additional 407 acres in Vienna and New Sharon and 463 acres of conservation easements in New Sharon. One of the parcels we have an agreement on is one that we have been working on for ten years and includes 180 acres on the top of McGaffey Mountain, the highest point in Kennebec County. If everything falls into place, these deals will result in conserving 1247 acres during this project, well in excess of our goal of 1000 acres.

Because of the current economic climate, the land conservation side of the project is going very well. We are able to negotiate agreements on attractive parcels at bargain prices. On the other hand, the fundraising side of the project is going much slower than we would like. To date, we have been able to execute deals with LMF funds by using some of our pre-acquired land as "match," using funds provided by generous grants from the Henry Janssen and Davis Conservation Foundations, and taking a no interest loan from the Norcross Wildlife Foundation. That loan must be paid back in November. We have applied to several foundations that have historically been very supportive of our efforts that are currently unable to help. We are continuing to pursue those opportunities but we need help from you, our members. If you are able, please consider a special tax-deductible gift or pledge for our current campaign. We are still over \$500,000 short of our \$595,000 goal for this campaign. If you have appreciated stock or are taking mandatory distributions from an IRA, there are some very attractive options currently available. Please contact our Treasurer, Dick Greenan, at 495-3740 or Executive Director, Peter Kallin, at 495-6039 for details. Please help us take advantage of current opportunities to protect these special places before its too late.



## President's Column: Sun, Fun, and Fundraising

Sunshine today after a month of rain, but fundraising is on my mind. We have two big fundraising requirements this summer and fall – the biennial Golf Tournament that funds our water programs – and the Kennebec Highlands Expansion that adds 1,000 acres of land to protect our watershed and viewshed. Other articles in this newsletter will detail the particulars of these efforts but, suffice it to say, we need to deliver. Your support is critical and much appreciated.

We have developed a much stronger community outreach program in the last few years and the effort this summer is our best yet with weekly education and recreation programs. Please take advantage of these and pass the word to others in our community. They are free and open to the public. Information on programs and dates is available online and at the BRCA office. A big thanks to the volunteers, staff, and members who have organized and funded these programs.

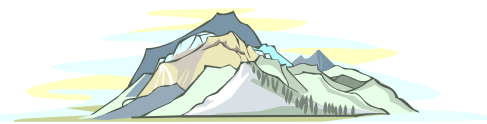
### Executive Director's Column

Our busy spring has become a busy summer. Our winter staff of three has grown to forty as we have added this year's Conservation Corps crews and associated staff and a full complement of courtesy boat inspectors (CBI). Our Education and Outreach Committee, under the leadership of Margaret Pietrak, has put together a very busy schedule of interesting lectures, hikes, canoe trips, bird walks, etc. Please check our web site for the latest schedule. We truly have something for everyone- and if you don't think so, please fill out the survey in the newsletter and let us know what else you would like to see. Please take advantage of some of these events to learn something new and meet and interact with some of your fellow members. Additionally, thanks to the Kennebec Highlands History Project, we currently have a special exhibit of old photographs of the Belgrade lakes region on display downstairs, below our office. Please stop in and check it out.

As described elsewhere in this newsletter, we have made significant progress in our Kennebec Highlands Phase III Project.

Re the Kennebec Highlands Expansion project, we have acquired several of the new properties we hope to acquire. Some make up the skyline and are visible from Belgrade, Rome, Smithfield, Mount Vernon, and Vienna, from Great and Long Ponds in the east and from Flying and Parker Ponds in the west, and from Routes 27 and 41 as you drive north from Augusta and Readfield. Some have great views, some have streams and wetlands, and some have historic sites. We plan to organize tours of these new properties this summer and fall. If you would like to walk the new properties and learn more about the project, please let us know, and make sure we have your email or mail address so we can notify you of dates.

Have a great summer, Charlie Baeder



Because of prevailing economic uncertainties however, progress in raising money to pay for it all has been slower than we would like. As our friends in public radio like to say, "Now, more than ever," we need YOUR support. Please call me or log in to our web site to see how you can help protect important parts of the landscape before it is too late. We are still continuing to try to expand our membership and encourage more volunteers to become involved in our programs. Next time you come to one of our hikes or canoe trips, bring a friend. We are looking for new members who are a lot like our current members- in love with this part of Maine and concerned enough to help protect it. The best place to find those people is among the friends and families of our current members. If you have a friend or family member who shares your conservation ideals who is not yet a member, please ask them to join or consider giving them a gift membership. Any member who refers a new member will receive a special gift as a token of our appreciation. Please contact me or stop by the office if you have any ideas about how to make BRCA more responsive to your needs.

All the best, Peter Kallin

### Board of Directors

**Charlie Baeder**

*President*

**Roy Bouchard**

*Secretary*

**Warren Balgooyen**

*Member at Large*

**Mel Croft**

*East Pond Association*

**Pat Donahue**

*Belgrade Lakes Association*

**Jane Eberle**

*Belgrade Lakes Association*

**Dick Greenan**

*Treasurer*

**Bill Libby**

*Snow Pond/Messalonskee Lake Association*

**Don Mairs**

*McGrath Pond & Salmon Lake Association*

**Jack Schultz**

*Belgrade Lakes Association*

**Maggie Shannon**

*Belgrade Lakes Association*

**Bill Swan**

*Belgrade Lakes Association*

~

**Peter Kallin, PhD, PWS**

*BRCA Executive Director*

### The Harold Alfond Memorial BRCA Pro Am Golf Tournament and Reception for the Lakes

Mark your calendars for Wednesday, August 19th, 2009, at the Belgrade Lakes Golf Club.

The day begins with registration at 11 a.m. and shotgun starts at noon. The Reception for the Lakes begins at 5:30 p.m. at the Belgrade Lakes Golf Clubhouse.

The pro-am golf tournament will benefit the BRCA Lakes Trust, which supports the Conservation Corps, Milfoil Prevention, and other important water quality programs of the Belgrade Lakes: East Pond, Great Pond, Long Pond, McGrath Pond, North Pond, Salmon Lake, and Snow Pond/Messalonskee Lake.



# BRCA EDUCATION & OUTREACH

## Summer Programming: Schedule of Events      Canoe Trips, Lecture Series, & Guided Hikes

<b>JULY</b>	21 Tuesday,	Lost Pond Canoe/Kayak Paddle from 10:00 am to 2:00 pm with Warren Balgooyen & Peter Kallin, call for directions	<b>SAVE THE DATE</b>	<b>BRCA's Annual Meeting Reminder for Members Wednesday, September 9th, at 5:15 p.m. Alden Camps, Oakland, Maine</b>
	25 Saturday,	Wishing Well Farm Nature Walk from 10:00 am to 12:00 pm with Warren Balgooyen, call for directions, easy nature walk		
	28 Tuesday,	Geology on French Mountain at 6:00 pm with Mel Croft, 1 mile easy-moderate walk		
	1 Saturday,	Kennebec Highlands & BRCA Trail Work, meet at 8:30 am at the BRCA office		
	4 Tuesday,	Mt. Phillip Nature Hike at 6:00 pm with Sarah Zazzaro, 2 miles easy-moderate		
<b>AUGUST</b>	6 Thursday,	"Kennebec Highland's History Project"; from 7:00 – 8:30 pm at the Union Church, Belgrade Lakes		
	8 Saturday,	North Pond Canoe/Kayak Paddle from 10:00 am to 2:00 pm with Warren Balgooyen & Peter Kallin, call for directions, canoe trip		
	11 Tuesday,	Geology on The Mountain at 6:00 pm with Mel Croft, 1.5 mile easy-moderate walk		
	18 Tuesday,	Great Pond Canoe/Kayak Paddle from 10:00 am to 2:00 pm, call for directions		
	19 Wed.,	The Harold Alfond Memorial BRCA Pro-Am Golf Tournament begins at 11:00 am & Reception to follow at the Belgrade Lakes Golf Clubhouse at 5:30 p.m.		
<b>SEPT</b>	20 Thursday,	"Archaeology" lecture with Peter Morrison of Crane & Morrison Archaeology from Freeport; from 7:00 – 8:30 pm at the Union Church, Belgrade Lakes		
	25 Tuesday,	Wishing Well Farm Nature Walk 6:00 pm with Warren Balgooyen, call for directions, easy walk		
	5 Saturday,	Timed 5K Race for the Lakes on a safe, rolling, out and back course 8:00 am at Camp Runoia, Belgrade.		

For all programs, please call BRCA ahead at 495-6039 to sign-up and get details for event

## The Kennebec Highlands History Project

The *Kennebec Highlands History Project* is a privately funded Maine non-profit corporation with a two-fold purpose: first, to promote scholarly research on the 18<sup>th</sup> and 19<sup>th</sup> century settlements within and around Kennebec Highlands; and second, to encourage, among the general public, an awareness of local history, its connection to larger regional and national trends, and its meaning for present day Americans.

The Kennebec Highlands History Project offers a variety of programming aimed at engaging the public in history and helping individuals know the stories of people, communities and the land. KHHP seeks to provide a foundation for talking about the things that matter in our communities today by building an understanding of the lives, routines, social conventions, religion, belief systems, politics and cultural of the past.

The Kennebec Highlands History Project supports scholars researching the 18<sup>th</sup> and 19<sup>th</sup> century Kennebec Highland settlements. In the summer of 2008, the Kennebec Highlands Research Project, in conjunction with the Belgrade Regional Conservation Alliance (BRCA), sponsored archeological research within Kennebec Highlands. The remains of homes and other structures were identified. Further archeological research is planned for this summer. Separately,

*All Aboard for a Joy Ride*, an exhibit of early 20<sup>th</sup> century photographs, is on display at the BRCA office during July.

beginning this summer, historians will catalogue existing documentary sources. This work will help determine the direction of future research.

Last summer there was a lecture on archeological digs within the state of Maine as well a dig within the Kennebec Highlands in which the public participated (both events co-sponsored by the BRCA). This summer there will be three history lectures (part of the BRCA Thursday lecture series), additional opportunities for participating in archeological digs and site research, and *All Aboard for a Joy Ride*, an exhibit of early 20<sup>th</sup> century photographs of Belgrade Lakes and surrounding towns. In the future, the History Project intends to offer a permanent exhibition, educational programs for school and college groups, unguided tours of archeological sites and possibly a reproduction farmstead.

In addition to co-sponsoring programs with the BRCA, the Kennebec Highlands History Project anticipates joint activities with local historical societies, educational groups and other interested parties. If you have ideas or interest in participating, you are encouraged to call or email Brewster Buttfeld, president of the Kennebec Highlands History Project.

(207) 749-7400, [kennebechistory@gmail.com](mailto:kennebechistory@gmail.com)

## Fire on Mount Phillip

WE OWE OUR  
GRATITUDE TO THE  
FOLLOWING  
MEMBERS OF THE  
VOLUNTEER ROME  
AND BELGRADE  
FIRE DEPARTMENTS:  
GARY FOSS  
ED PEARL  
SCOTT PEARL  
ADAM CLEMENT  
DANIELLE CLEMENT  
RICKY NYE  
GUY WILLIAMS, SR.  
GUY WILLIAMS, JR  
JASON LOSSTROM  
JIM REAL  
KAREN CHASE  
CHRIS RINGE  
BILLY HAYES

On Saturday, June 6<sup>th</sup>, BRCA member Pricilla Grant, who summers on Taconnet Island, decided to go for an afternoon run. As she jogged up Starbird Lane towards Mount Phillip she decided it was such a beautiful clear day that a jog up the mountain would be much more exhilarating than competing with the cars racing down Route 225 so she headed up the Mount Phillip Trail. When she reached the bench at the top of the mountain, she paused to catch her breath and take in the view. As she was looking out over Great Pond she suddenly smelled smoke. Thinking someone might be smoking nearby or perhaps burning a small fire she hiked west towards the rocky summit and spotted a tree ablaze and a rapidly spreading, wind-fanned, fire in the leaves and pine needles covering the ground. With no means of putting out the fire, she ran back down the mountain and flagged down a passing car to borrow a cell phone to call 911. The call was passed through to the Rome Volunteer Fire Department.

Gary Foss, who lives nearby on Route 225, was the first to respond. He raced up the mountain to assess the situation and radio back to other responders about what equipment to bring and how best to reach the scene. Members of the Rome Fire Department, including: Ed Pearl, Scott Pearl, Adam and Danielle Clement, Ricky Nye, Guy Williams, Sr., Guy Williams, Jr., Jason Lossstrom, Jim Real, Karen Chase, and Chris Ringe; and Billy Hayes of the Belgrade Fire Department, quickly climbed the mountain carrying shovels and "Indian Pumps" (pressurized 5 gallon back pack water tanks with a spray nozzle attached) to fight the fire. After a couple of hours and multiple trips up and down the mountain, they got the fire extinguished. Thanks to their rapid and professional response, the damage was limited to a handful of trees and about 1/2 acre of charred ground. We are extremely grateful to all who responded and helped avert a much more serious situation.

The fire began at the base of a cliff below a few big rocks where visitors often sit to enjoy the view and rest. It probably was the result of an incompletely extinguished cigarette that was tossed from the top of the cliff and landed among the dry leaves and pine needles at the base of the cliff. As the cigarette smoldered, the gusty wind probably caused it to flare up and the fire spread across the ground and up the cliff. Several small oak trees and some pines caught fire and were damaged, possibly fatally. This event graphically illustrates the dangers of careless smoking and shows why no fires are allowed on BRCA properties. We ask our members to help enforce these rules if they see such activity.



The rain garden and infiltration steps at Day's Store has had a lot of rain so we could see how it was working controlling the erosion caused by the run-off from Route 27.

## Conservation Corps - Anti-Erosion Work

As the summer slips by, the BRCA Conservation Corps is in the middle of another busy work season. Over the past 13 years, the Corps has completed 549 projects, and when we look at what we've done, what we immediately notice is that almost all of our projects have been on lakefront property. This isn't a bad thing; lakefront property has a significant and immediate impact on water quality, and everybody who owns land on a lake should take an interest in protecting it. But the Conservation Corps is concerned with what happens away from the shoreline, too.

The Belgrade Lakes Watershed covers 180 square miles in 13 towns, and anything that happens in this area affects the water quality of the lakes. Runoff entering ditches and streams throughout this area makes its way downstream to the lakes, and any nutrients it carries come with it. By preventing soil erosion, minimizing surface runoff, and planting buffers along tributary streams, property owners far from the shorefront can help protect water quality in lakes and streams, and the Conservation Corps can help with advice and free labor.

Anyone interested in having the Conservation Corps help with a project, whether they live on one of our lakes or upland within the watershed, should contact Sarah Zazzaro at the BRCA office or via email at [brcacc@gwi.net](mailto:brcacc@gwi.net).

## Summertime Bathing

Bathing in the lake was a fun summer tradition that seemed totally harmless before we started to study water pollution. We now know using soap and shampoo is not an advisable activity, particularly when and where lots of other people are doing it.

While many soaps are biodegradable, that does not mean they are harmless. Even assuming there would be rapid dilution; the localized concentrations may be high at least briefly when there are multiple bathers in the same area, together or in succession. Many soaps contain surfactants which are important for cutting oils and similar substances and making them soluble so they wash off. These are often either toxic or challenging to life in the lake, especially microorganisms and invertebrates. Soaps may also alter the pH (acidity) of the water significantly in the vicinity of their use. Deodorant soaps and dandruff shampoos often contain heavy metals or other ingredients that are harmful when multiple people are using them in an area.

Many soap labels claim “no phosphorus” or “low phosphorus”. Most soap, even “no phosphate” ones, contains some phosphorus. While several “green” products are indeed a lot better than the standard bathing soaps and shampoos in this regard, the body oil and other grime washed off bathers’ bodies, greatly aided by soaps with their surfactants, can contribute a lot of phosphorus to fresh waters.

In addition to phosphorus, body oils, and other pollutants, bathing in lakes can contribute bacteria and viruses at higher amounts than just swimming. While it may or may not be a health issue in a given situation, do we really want to increase the bacteria numbers in lakes where others are swimming? And many people find the thought of swimming where others have been bathing unpleasant – it makes the lake seem more of a bathtub than a lake.

So what to some may seem an innocuous activity in reality is one of the many things people do that all add up to water pollution. Everyone should know that it is not allowed under state law to intentionally introduce foreign substances (including soap and shampoo) into our waters without a permit.

However, let’s not just rely on the law as a justification for saying not to do it. The reasons stated above are behind the law and why I can’t encourage people, pets, or any other kind of bathing or washing in lakes.

Summer camps and public facilities have a special opportunity and responsibility to be good stewards of our waters and to educate not only their campers but the public by way of example. We as lake users have our own role to play by not polluting the water ways we all share.

-Roy Bouchard, Board Secretary

## Great Meadow Stream Canoe and Kayak Trip, June 20th

The BRCA sponsored their first Canoe and Kayak Trip from Pine Tree Camps on the south shore of North Pond down the Great Meadow Stream to Great Pond. The trip was led by the talented and gifted Warren Balgooyen and assisted by Mel Croft and Dick Greenan.

The liquid sunshine quit just in time for our 4 hr trip down this beautiful meandering stream. Warren and Mel shared their expertise on the local flora, wildlife and unique geology with a great time being had by all. Thanks to all! See you on our next trip! -Dick Greenan, Board Treasurer



# Consolidated Financial Statements

Statement of Activities		2008	Balance Sheet										2008
Support and Revenue			BRCA	Milfoil	Water- shed	Conservation Corps	Land Trust	Stewardship	Lakes Division	Education Division	Advocacy Division		
Grants		39,814											
Contributions	Memberships	52,949											
	Organizational	20,050											
	Donations	56,058											
Fundraising events		23,900											
Investment (loss) income		(41,978)											
Rent		1,300											
Publication Sales		2,716											
Program Service Revenue		74,376											
Other revenues		2,245											
<b>Total Support and Revenue</b>		231,430											
<b>Expenses</b>													
Program Services		254,342											
Management and general		67,884											
Fundraising		11,401											
<b>Total Expenses</b>		333,627											
<b>Revenue less Expenses</b>		*(102,197)											
<b>Total Net Assets or Fund Balances</b>													
Beginning		1,623,142											
Ending		1,523,006											
			<b>Assets</b>										
			Cash & Cash Equivalents	67,384	18,338	4,807	(2,727)	129,803	(118,850)	22,004	23,623	(100)	144,282
			Receivables				140	2,520		491		3,151	
			Investments				92,720		34,343			127,063	
			Endowments						32,305			32,305	
			Land									1,341,598	
			Buildings						5,000			5,000	
			Accum Depr - Bldgs						(5,000)			(5,000)	
			Vehicles				5,647					5,647	
			Depreciation-Vehicles				(5,647)					(5,647)	
			Prepaid Expenses					26,318				26,318	
			<b>Total Assets</b>	67,384	18,338	4,807	90,133	158,641	1,289,396	22,495	23,623	(100)	1,674,717
			<b>Liabilities and Net Assets</b>										
			<b>Liabilities: Accounts Payable and Accrued Expenses</b>										
			<b>Total Liabilities</b>	10,711				141,000					151,711
			<b>Net Assets</b>										
			Unrestricted	58,474									58,474
			Restricted		9,216		146,991	31,004	1,298,180	57,338	24,000		1,566,729
			Current Year Earnings	(1,801)	9,122	4,807	(56,858)	(13,363)	(8,784)	(34,843)	(377)	(100)	*(102,197)
			<b>Total Net Assets</b>	56,673	18,338	4,807	90,133	17,641	1,289,396	22,495	23,623	(100)	1,523,006
			<b>Total Liabilities and Net Assets</b>	67,383	18,338	4,807	90,133	158,641	1,289,396	22,495	23,623	(100)	1,674,717

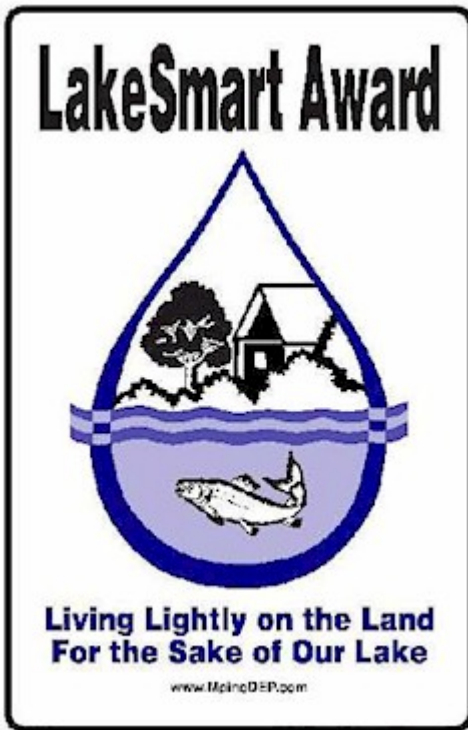


Year Ended  
December  
31, 2008

For more  
information  
contact the  
BRCA  
Treasurer,  
Dick  
Greenan,  
at  
dick@good  
xrays.com

\*-Approximately half of the loss for the year was due to change in value of various investment accounts. The Lakes Division is funded primarily by our biennial golf tournament and in 2008 was spending money raised at the 2007 tournament. Similarly the Land Trust purchased some property with money raised in prior years.

## LakeSmart Volunteers Trained and Ready



On June 10, ten volunteers from Great Pond, Long Pond, East Pond, Salmon Lake and McGrath Pond took part in a day-long training session to become certified volunteer evaluators. Instructors from Maine Department of Environmental Protection (ME DEP) and Maggie Shannon from the Maine Congress of Lake Associations (Maine COLA) trained volunteers in the LakeSmart assessment process, which looks at the most important ways that a shorefront property can affect the lake. Lake-friendly properties receive the coveted LakeSmart award and serve as examples of low-impact lakeside living for other lake residents. The volunteer evaluators will review candidate sites and recommend properties for award status, thus helping extend the reach of LakeSmart in this time of limited program funding.

Many thanks to all these volunteers for donating their time to support the LakeSmart program in the Belgrade Lakes. If you would like to learn more about the LakeSmart program or arrange for somebody to look at your property, contact Jason Bulay at 207-495-6039, or [brcamf@gwi.net](mailto:brcamf@gwi.net) at the BRCA office.

### LakeSmart Volunteer Evaluators

Michael Bernstein – BLA  
Pat Donahue – BLA  
Mark Heuberger – BLA  
Blaine Kopp – BLA  
Maureen Maslak – BLA  
Maggie Shannon – BLA  
Mel Croft – EPA  
Michele Joly – EPA  
Dick Enright – MP-SLA  
Robin Deveney – MP-SLA

## Milfoil Roundup

- Despite the wet weather, BRCA's Courtesy Boat Inspection program is off to a busy start. Through June 26, paid and volunteer inspectors logged a total of 1603 hours at the public boat launches in the Belgrade Lakes area and inspected a total of 2538 boats. At this pace, we will inspect a record 8,000 boats this summer.
- Courtesy boat inspector Lila Zanuccoli recorded the first "save" of the summer, removing curly-leaf pondweed (*Potamogeton crispus*) from a boat entering Long Pond. The boat had come from Greenwood Lake in New Jersey, which is infested with both curly-leaf pondweed and Eurasian milfoil. Curly-leaf pondweed is one of Maine's "eleven most unwanted" invasive plants and is currently in one Maine lake – West Pond in Parsonsfield. Like milfoil, curly-leaf pondweed can rapidly take over a lake if it is introduced. If you see Lila at the boat ramp, be sure to thank her!

### Pete's Corner: Letters to the Editor

I had decided not to give this year because of tough times. Today, I hiked the new trail on French Mt. and decided this is the kind of thing I want to support. Keep up the good work! -JB

- The struggle against Eurasian milfoil in Salmon Lake continues. DEP divers have visited the cove 5 times this spring and summer to remove milfoil. These efforts removed a total of 325 plants, but new plants continue to sprout from root fragments. At present, the milfoil in Salmon Lake is under control, but a lot of work remains to be done.

- **Volunteers are needed** to help with Invasive Plant Patrols, searching for signs of milfoil and other invasive aquatic plants in at-risk areas:
  - East Pond boat ramp: July 19
  - North Pond boat ramp: July 23
  - Belgrade Stream above Wings Mill dam: July 30
  - Long Pond boat ramp: August 18
  - Great Pond boat ramp: August 20

Each of these will take place from 8:30 – 11:00. No special equipment or training is needed to volunteer, but certified divers are especially needed. Canoes and kayaks are welcome but if you don't have one, we will pair you up with someone who does. If you would like to volunteer, contact Jason Bulay at the BRCA office at 495-6039 or e-mail [brcamf@gwi.net](mailto:brcamf@gwi.net).

Hi, It is very exciting to hear about plans for new acquisitions. I do have a couple of questions I'm curious about. According to the map it looks like you are trying to get the blueberry fields. I have thought for a while that these areas would be prime for condos, particularly since parts of the blueberry fields below the Highlands area have now see homes being built along their edges. I have heard that attempts were made in the past to buy those areas and /or lease them back to the company to harvest berries. Do you have reasonable chances this time? Is the plan to keep the areas clear for blueberries or would they be allowed to grow back to woods? I raked there as a youth and fondly remember the great views from one field in particular--the real steep one on the backside of the mountain, I think, from the clubhouse. Anyway, my partner and I will support your new effort. Thank you for all you are doing. Rodney Porter



# BELGRADE REGIONAL CONSERVATION ALLIANCE

171 Main Street  
PO Box 250  
Belgrade Lakes, Maine 04918  
[www.belgradelakes.org](http://www.belgradelakes.org)  
Phone: 207.495.6039  
E-mail: [brca@gwi.net](mailto:brca@gwi.net)

To view the BRCA Newsletters  
in full color with active  
hyperlinks visit our website

## BELGRADE REGIONAL CONSERVATION ALLIANCE's 2009 Program Planning Questionnaire

All members and friends of the BRCA are asked to complete the following questionnaire, to assist the BRCA in planning the types of programs, activities and other events that might be arranged and conducted during the coming months.

1. **Have you attended or participated in any BRCA programs** or activities in previous summers, such as Talks, Nature/Bird/Plant Walks, Story-telling, Hiking/Climbing, Films/Slides or films with discussion:

YES \_\_\_ If "Yes", please indicate those that you particularly enjoyed:

---

NO \_\_\_ If "No", what other suggestions for programs - ones you might like to attend - do you have:

---

2. **Would you prefer events to be scheduled on (Check all that apply):**

Weekends \_\_\_ Weekdays \_\_\_ Evenings \_\_\_ Afternoons \_\_\_ Mornings \_\_\_

3. **Which types of programs from the following would you prefer? Check all that apply.**

Family-oriented \_\_\_ ; Ages 4 - 7 \_\_\_ ; Ages 8 - 12 \_\_\_ ; Teen-aged \_\_\_ ; Adult \_\_\_ ; Mixed ages \_\_\_

4. **How did you find about the BRCA programs?** (state as many sources as you used)
- 

When you have completed this questionnaire (now or later) please return it to the BRCA office:  
PO Box 250, Belgrade Lakes, 04918. If you would like to return this electronically,  
cut and paste this into an e-mail and send to [brca@gwi.net](mailto:brca@gwi.net)